

October 2015 | Vol 2 | Issue 18 | ₹120

DESIGN detail

the architecture magazine



THREE TREES HOUSE
CHATTARPUR FARMS BY
DADA & PARTNERS

**THE ARCHITECT OF
PAST, PRESENT & FUTURE**
ARCHITECT HAFEEZ CONTRACTOR

The Plus House

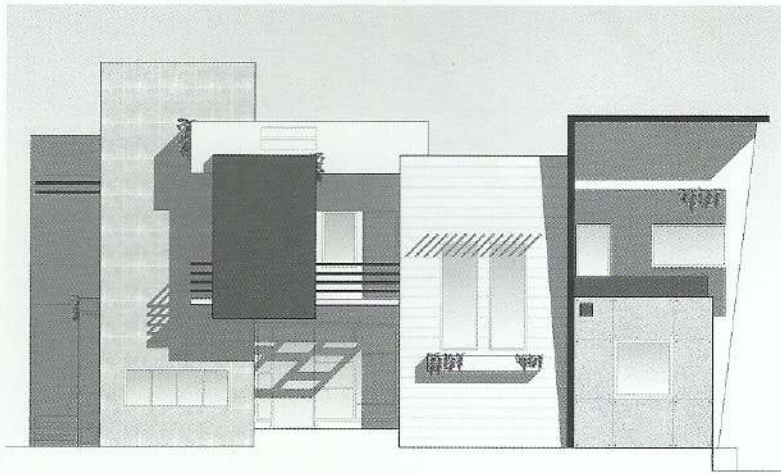
Text : Team Design Detail
Photos : Saptorshi Majumdar

The Plus House was perceived as a creation of rectangles within a square, a concept that helped decide the proportions of the project during the planning stage. The design conceived as a response to a questionable site that sat on an almost square plot 55' x 58', generating a challenge as well as a curiosity to achieve a depth of travel and sight.

The facade, complete with 25 feet high structure can be seen as volumes and voids sharing spaces.



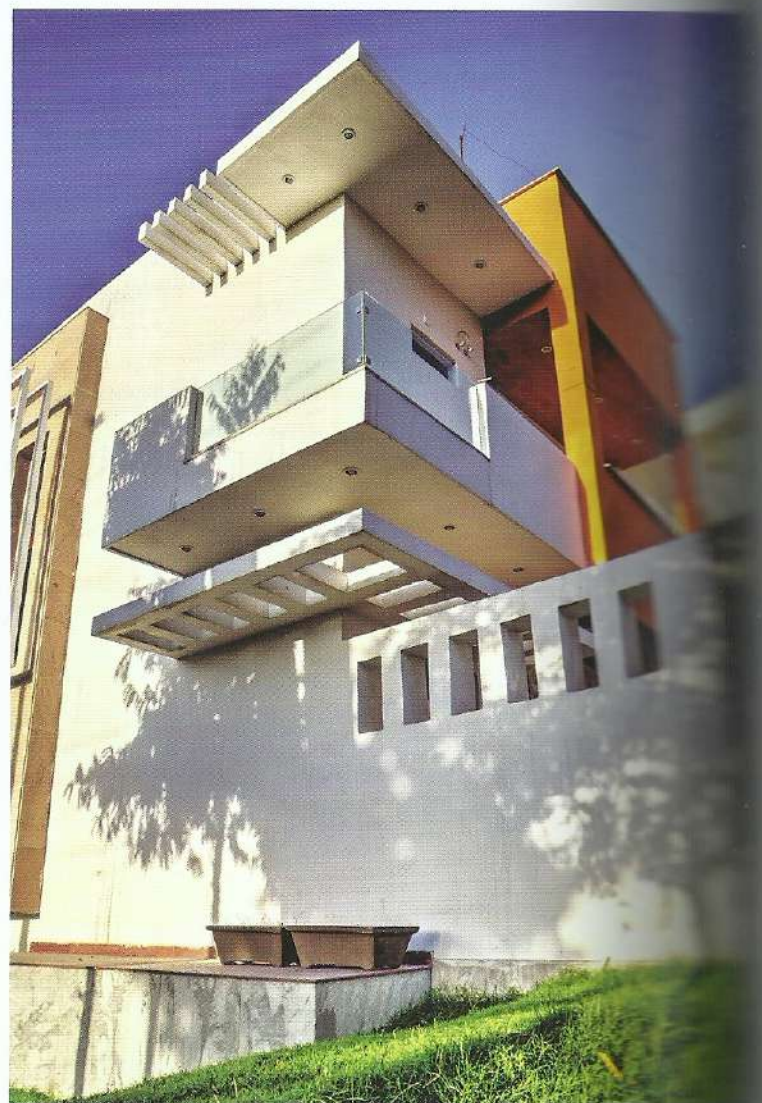




Front Elevation

overlapping and interchanging their behavior as well as presence. The vertical edge of the corner is sliced open in a tapered hugging manner with MS pergola on the roof level, adding the play of shadows and light. Insertion of MS *jaali* is eminent at various places. Use of sober orange textured paint balances its harmony through the cladding of Dholpur stone on the left tower. Compressed laminate sheets in exposed wooden grains add to the material palette. Altogether, the volumes and voids forming the face of the house are a result of interior space planning and layout.

The interiors, a mix of modern and the traditional is the core aspect of the design incorporated. The circulation pattern gives





OPPOSITE PAGE TOP
North Side
Elevation

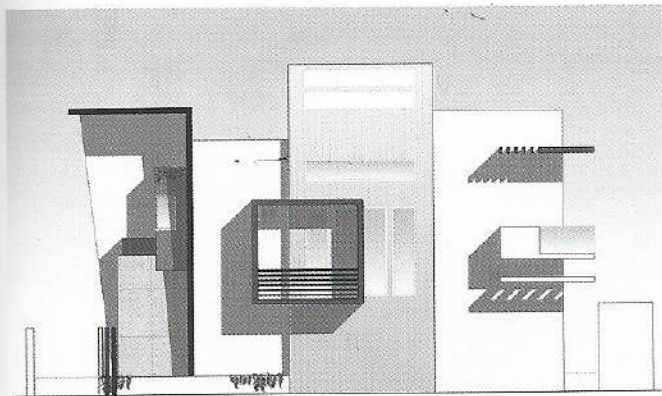
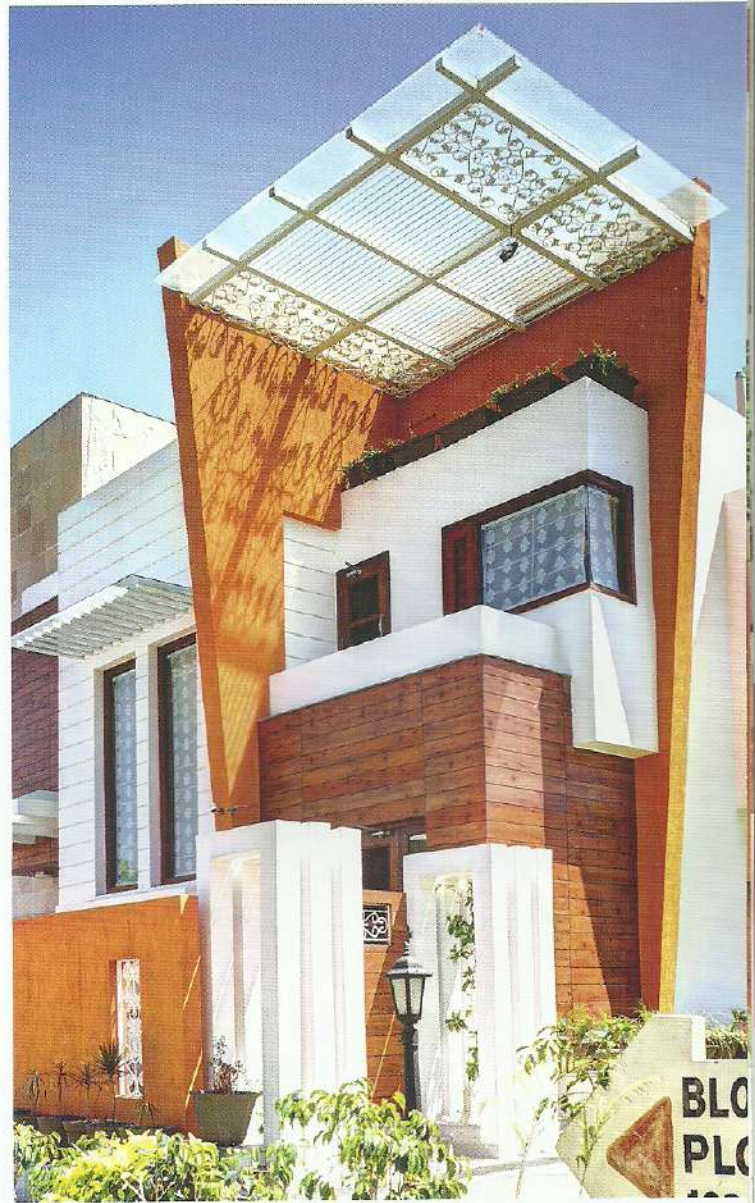
OPPOSITE PAGE
BOTTOM
West Side Balcony

ABOVE
Entrance through
West side green
area

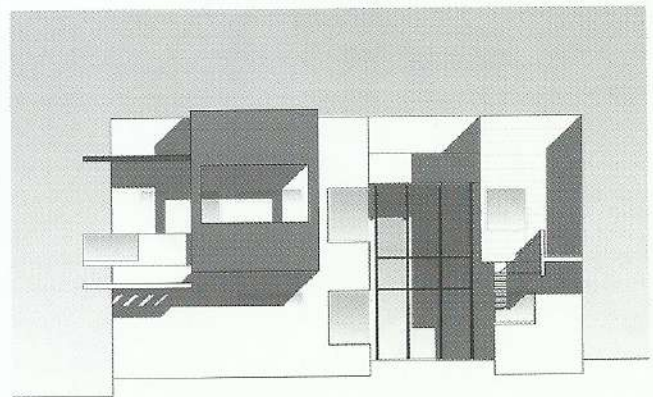
RIGHT
The corner of the
building

rise to a dramatic story of 'within and beyond.' The whole house catering to a small family of four revolves around and about a dense green focal point and the impact of the so created courtyard can be felt from the entrance as well as the private areas of the house. Here, the "plus" is two axes that generate four rectangles within a square that goes from end to end of the plot. This in turn ensures proper ventilation and also allows natural light to enter the house.

The courtyard has a sunken pebble bed with glass top, which acts as a stage hosting the court. Italian stone 'Diana' has been used throughout the flooring, with its grains leading to the court. Wooden flooring is also



Side Elevation



Rear Elevation





GROUND FLOOR PLAN



FIRST FLOOR PLAN



- LEGEND**
- 01: Driveway
 - 02: Veranda
 - 03: Front Lawn
 - 04: Drawing Room
 - 05: Lobby
 - 06: Dining Area
 - 07: Kitchen
 - 08: Lobby Area
 - 09: Store
 - 10: Puj
 - 11: Guest Bedroom
 - 12: Toilet
 - 13: Staircase
 - 14: Courtyard
 - 15: Master Bedroom
 - 16: Wife's Bedroom
 - 17: Washroom
 - 18: Rear Lawn
 - 19: Bar
 - 20: Gallery
 - 21: Lobby
 - 22: Parent's Bedroom
 - 23: Sit-out overlooking Courtyard
 - 24: Separate Unit- Drawing Room
 - 25: Bedroom
 - 26: Kitchen
 - 27: Store
 - 28: Separate Entry

OPPOSITE PAGE

Courtyard over looking the Dining Area

ABOVE

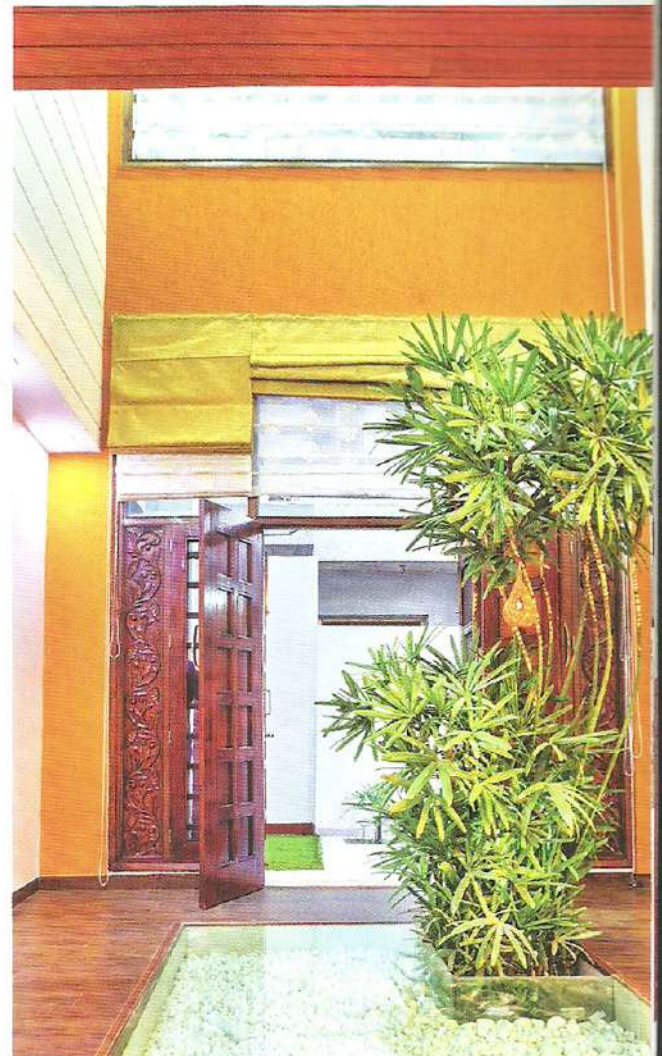
Roof plans

ABOVE RIGHT

Courtyard opening towards the rear lawn area

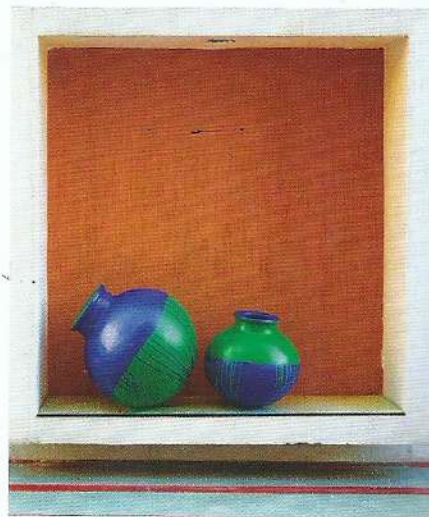
FACT FILE

PROJECT :	THE PLUS HOUSE
LOCATION :	PANIPAT, HARYANA
ARCHITECTS :	STUDIO AN-V-THOT ARCHITECTS PVT. LTD.
CLIENT :	PAYAL & VINOD JUNEJA
BUILT AREA :	3650 SQ. FT.



used at places to add warmth. Numerous sit-outs have been planned and placed at various intervals within the house. Extensive use of *jaali* can be seen as partitions which are then repeated in furniture as well. The ceiling of the lobby, leading to the court, is finished with veneer backed by commercial board which follows through the glimpses of backlit onyx stone in *puja*, sea green lacquered glass in kitchen, as well as a wall of wallpaper in the dining. Traditional inserts can be seen in the rear door leading to the backyard that overlooks the coffee corner through the double height where the palm reaches its footstep. The backyard hosts a small shower pool adjoining the garden.

A small bar sits as a vertical extension of the drawing room at the mezzanine level with a small pantry, a washroom and a private



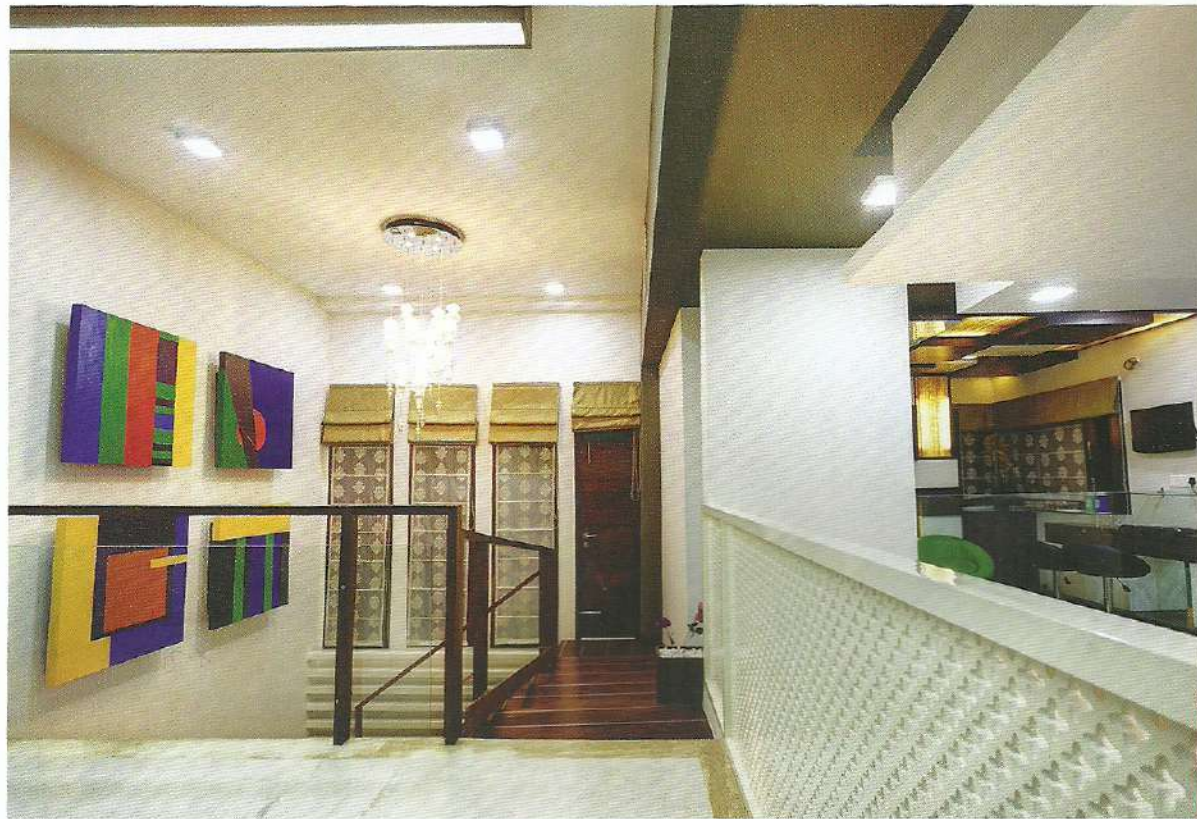
balcony. This area is enclosed with backlit onyx stones, white PU pigment paint and dark veneer, while the green fabric used on the furniture adds an element of youthfulness. The master bedroom and the children's bedroom are designed to evolve as two characters with former being warm and the latter being young. The master bedroom with its neo-Victorian wall lights, a chandelier and Victorian wallpaper with shades of brown

ABOVE
Living Area separated from Dining area with jali and wallpaper wrapped wall

TOP RIGHT
Boundary wall opposite the main entrance of the house

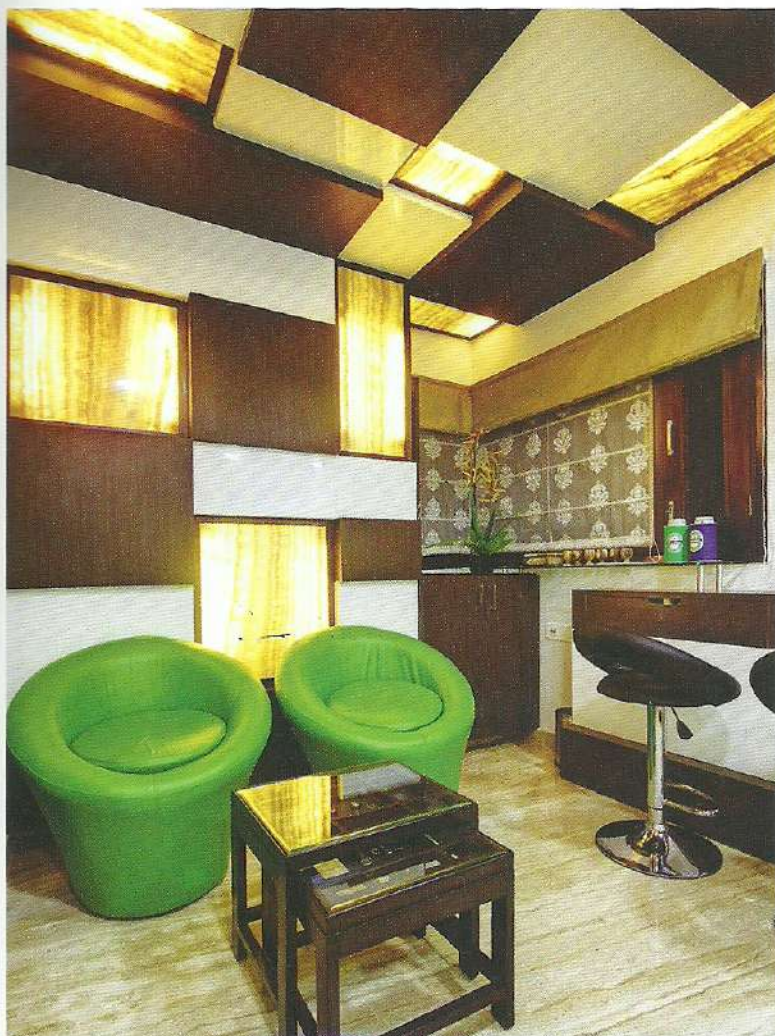
RIGHT
Staircase combined with sit out area with windows at eye level opening towards the green area on the west of the plot





RIGHT
First floor lobby area
with staircase at the left
& bar at the right

BELOW
Bar Lounge



STUDIO AN-V-THOT ARCHITECTS PVT. LTD.

Studio AVT firmly believes in the uttermost importance of the space within and beyond rather than the built frame. They endeavor to design and develop an environment for stories to take birth and remain,

where true feelings are captured and felt with a sense of belonging, only to resonate through time.

In the year 2009, Architect Ankita Sweety and Pratyosh Chandan initiated "Studio An-V-Thot Architects Pvt. Ltd." a Design Consultancy firm in Delhi. Since then, the studio has taken up and completed several architectural and Interior projects of varied nature,

scale and sizes. The studio's core effort to convert a thought into reality has consistently led them for pursuit of excellence.



and off-white perfectly blends to give the room an ostentatious feel. The raised study in the children's room has glossy pigment paint with pastel green laminate. The curtains and rugs used in the room also have a similar colour palette.



ABOVE
Master Bedroom

BELOW
Kid's Bedroom

RIGHT
Kitchen

Hanging lights and custom-designed ceiling lights have been used throughout the house adding glamour and warmth. The threshold between the ground and the first floor has a four-paneled water-painted false wall with a splash of multiple colours by the designers themselves. Altogether it's a house with spaces of varying identities yet similar character. **dd**

